

# RHTG roof hatch

Gorter® always on top!



SINCE 1928



## Gorter® always on top!

Gorter® is an international organisation founded in 1928. Gorter has specialised in roof, floor, wall, and ceiling access since the nineties of last century. The Gorter Group™ is now represented in Europe, Australia, Asia, and the Middle East.

Its own engineering department enables Gorter® to deliver complete and reliable access solutions in the form of hatches with associated climbing facilities. The components are optimally adapted to each other, not only in terms of design, but also from the perspective of safety, and certified by authorised bodies where possible. Gorter is the specialist in roof, floor, walls, and ceiling access for a reason.

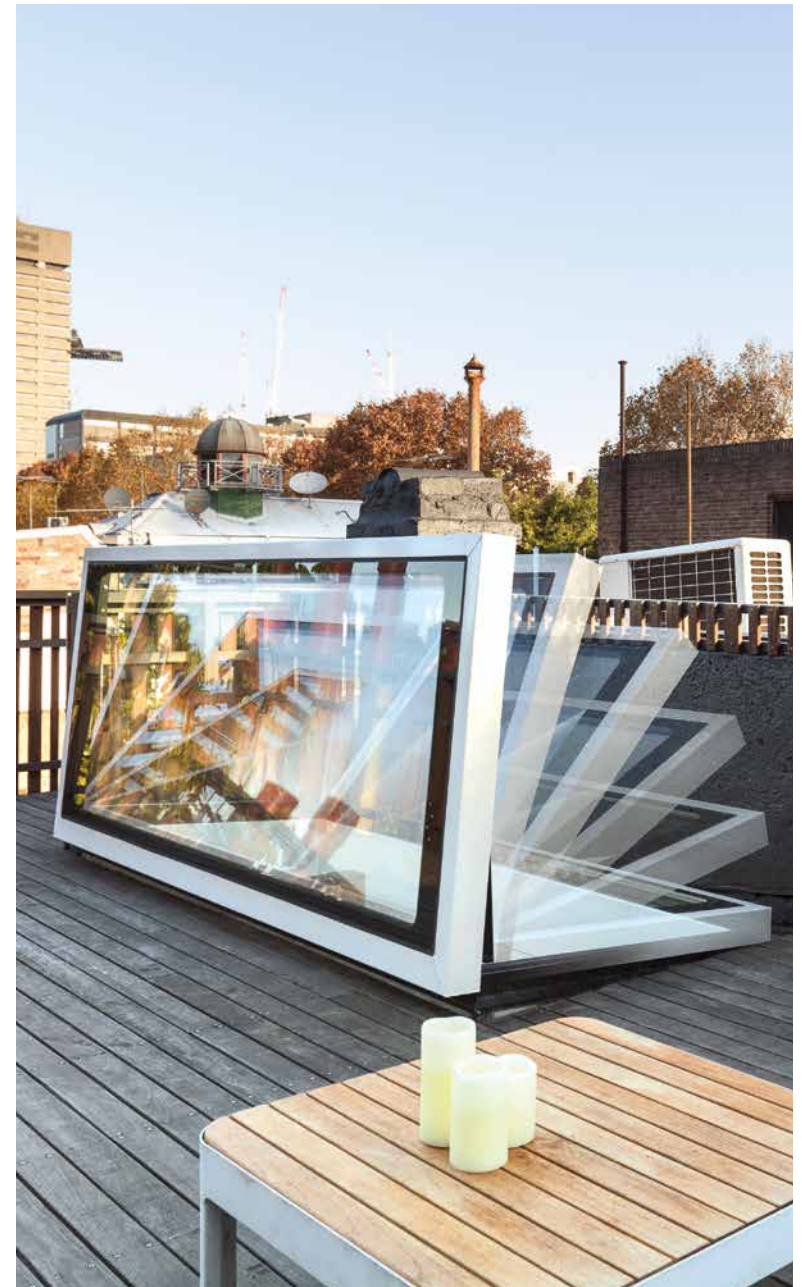


# RHTG roof hatch

For roof patio, office, and home

Gorter glazed roof hatches are ideal for use in buildings or homes where natural daylight is desired in the space below. The roof hatches can be supplied with a Gorter fixed stair as a combination, for complete, secure and certified roof access.

The entire construction of the roof hatch is thermally broken. Together with the HR+++ triple glass, this provides very good insulation and a pleasant climate in the space below. All RHTG roof hatches are delivered with a European Technical Assessment (ETA-18/0831) and are CE certified.





## Gorter for architects

We would be happy to provide architects, contractors, and project developers with the right information. Do you have a special challenge or are you looking for a hatch for a specific use? Contact us immediately and we will be happy to help you.

### **Free downloads: CAD/BIM, specification texts and more**

You can easily download technical drawings for your project from the Gorter website. We provide drawings in Revit, AutoCAD, and SketchUp formats. You can also find an overview of specifications texts, manuals, and other product documentation.



# Safe roof access

Gorter products guarantee the highest level of safety. Besides smart, integrated security facilities, a lot of our products have been inspected and certified by official bodies, ensuring the safest roof access possible.

## Why does your building need roof access?

There are several ways to access a roof. However, the safest way is through a building. The building provides sufficient handholds in the form of existing facilities and there is a very small risk of falling. Placing a roof hatch with accompanying climbing equipment makes the last phase of accessing the roof safe as well.

## Safety facilities of the roof hatch

The Gorter RHTG roof hatches have multiple safety facilities. One of the safety facilities is unique to Gorter, the grip, which offers safe support when accessing or leaving the roof. You can operate the roof hatch with one press on the button or with sensors which shut down the motors when a blockage is detected. This prevents crushing or mechanical damage. The glass is layered and offers fall protection when the hatch is closed. Gorter climbing equipment, such as the scissor stair and ladder, can be locked during use to make sure they cannot be moved or retracted unexpectedly.

## Safety certification

The safety of Gorter RHTG roof hatches and combinations have been checked based on the most stringent EN standards and are, where applicable, delivered with a TÜV NORD and Aboma certificate. The RHTG roof hatches are also the first glazed roof hatches on the market that are delivered with an European Technical Assessment (ETA), which indisputably demonstrates the proven performance and the CE marking. For use in Australia and New Zealand, the roof hatches have a CodeMark certification.



# Maximum thermal insulation

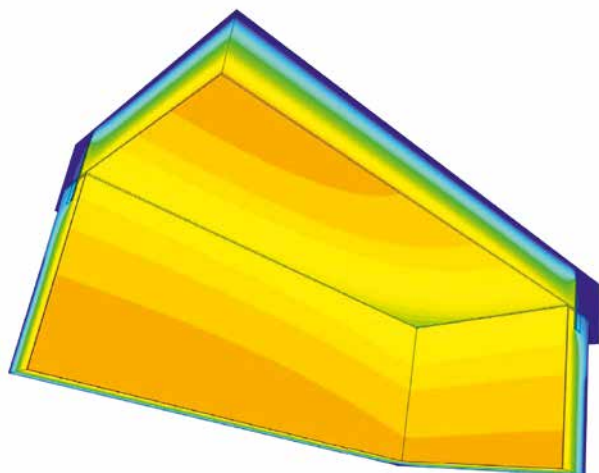
The RHTG roof hatches have a fully separated thermal structure and HR+++ glass. Thanks to the lack of cold bridges and the smartly placed insulation materials, the roof hatch offers a very high degree of insulation throughout the structure. This prevents condensation and saves energy costs.

## Proven high insulation value

Gorter is aware of the fact that the roof hatch is an integral part of the roof and that it must add to the overall insulation value. The Gorter roof hatches are the only roof hatches with a proven, very high insulation value for the entire structure. EuroSolid has studied the thermal performance in accordance with EN-ISO 10077-2 and it has officially been demonstrated that the Gorter RHTG roof hatches have an insulation value of  $U_w \leq 0.83 \text{ W}/(\text{m}^2 \cdot \text{K})$ . The glass has an insulation value of  $U \leq 0,500 \text{ W}/(\text{m}^2 \cdot \text{K})$ .

## Patented structure for a better interior climate

The roof hatch has a patented (patent no. 2519072) fully separated thermal structure and double sealing around the cover. Thanks to its unique design, the roof hatch is also very suitable for use during cold winters or in cold areas. The structure prevents ice or condensation on the inside of the roof hatch. Little or no unwanted air flows to the underlying space will take place thanks to the lack of large temperature differences on the inside.



## CE certification, ETA-18/0831

The Gorter RHTG roof hatches are delivered with an European Technical Assessment (ETA), which indisputably demonstrates the proven performance and the CE marking. The ETA is a document with information about the performance of the roof hatch in relation to its essential characteristics. The ETA for the Gorter roof hatches was issued by the Technical Assessment Body SKG-IKOB established in the Netherlands.

The ETA is valid in all 28 European Member States and members of the European Economic Area, as well as Turkey and Switzerland.



CE



**Gorter Group BV**  
PO Box 265  
NL-1740 AG SCHAGEN  
The Netherlands

**RHTG**

ETA 18/0831

**Gorter Roof Hatch Glazed**

Thermal transmittance (EN-ISO 10077-2)	: $U_w \leq 0.83 \text{ W}/(\text{m}^2 \cdot \text{K})$
Resistance to snow load (EN 1991-1-3)	: $5 \text{ kN}/\text{m}^2$
Resistance to wind load (EN 12210)	: Class E 2400
Water tightness (EN 12208)	: Class E 650
Impact (EN 13049)	: Class 3
Airborne sound insulation (EN-ISO 717-1)	: 27 dB
Air permeability (EN 12207)	: Class 4
Content and/or release of dangerous substances	: Declaration of manufacturer

# Unique properties

Powder coated in two colours:  
RAL 9005/9010



Thermally separated cover



Delivered with ventilation switch and remote control



Safe handle when entering or exiting roof



Standard equipped with two powerful electric motors



Thermally separated curb



Impact resistant and burglar-proof HR+++ glass



Burglar-proof stainless-steel hinges



Wind and water-resistant sealing all around

## Use and options



### **Burglar-proof - HR+++ glass**

Gorter roof hatches have a robust construction. The layered glass is impact resistant and is equipped with burglar-proof foil.

### **Noise attenuation**

Sound can also enter a building via the roof. For example, the sound of an airplane flying overhead. The Gorter RHTG roof hatch is well-insulated and offers a standard sound reduction of 27 dB.

**PEUTZ**



### **100% UV light filter**

With 100% filtering of the incoming UV light, furniture and other items in the underlying room are protected from the discolouring effects of the light.



### **Wind and water-resistant seal**

The frame is equipped with a wind- and water-proof seal all around. This makes the roof hatch suitable for installation in tall buildings and areas with frequent storms.

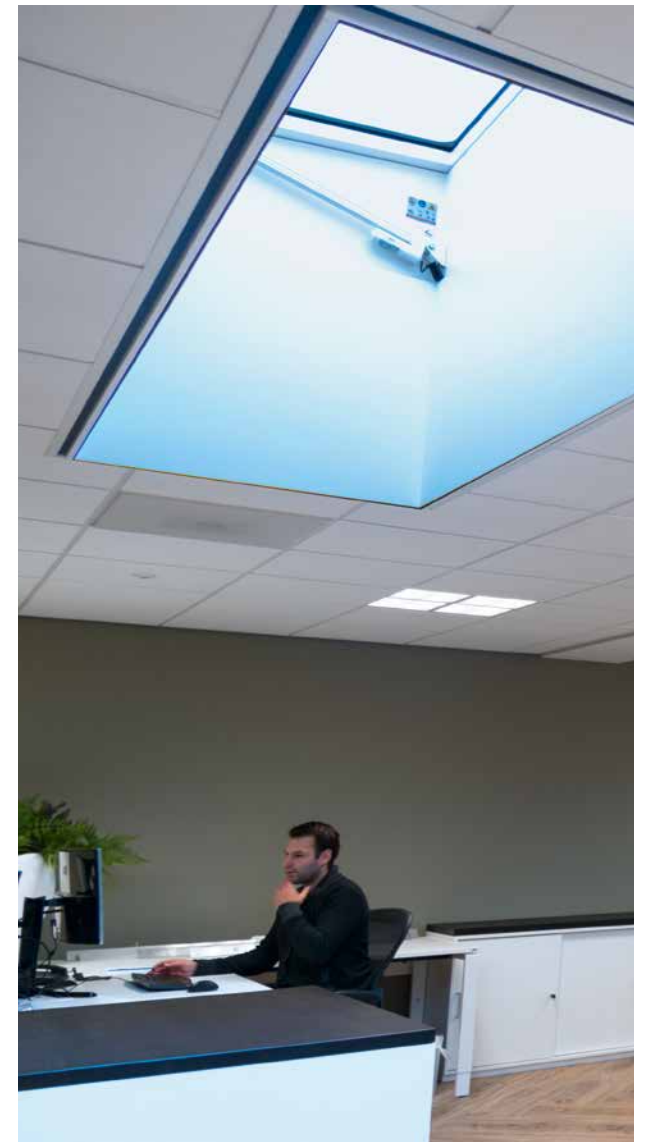


### **Electric roof hatch**

All Gorter RHTG roof hatches are standard equipped with two powerful motors placed on both sides of the cover. The opening of the roof hatch is continuous and the motor switches off automatically when the open or closed position is reached.

### **Ventilation**

The roof hatch cover can be opened slightly for ventilation purposes. After letting go of the operation buttons, the cover will remain in this position.



**Operation**  
The operation of the roof hatch is carried out via an included RF remote control and/or ventilation switch. This last item is a compact operation panel which is wired to the control unit of the roof hatch.

# Assembly, delivery, and warranty

## Sustainable

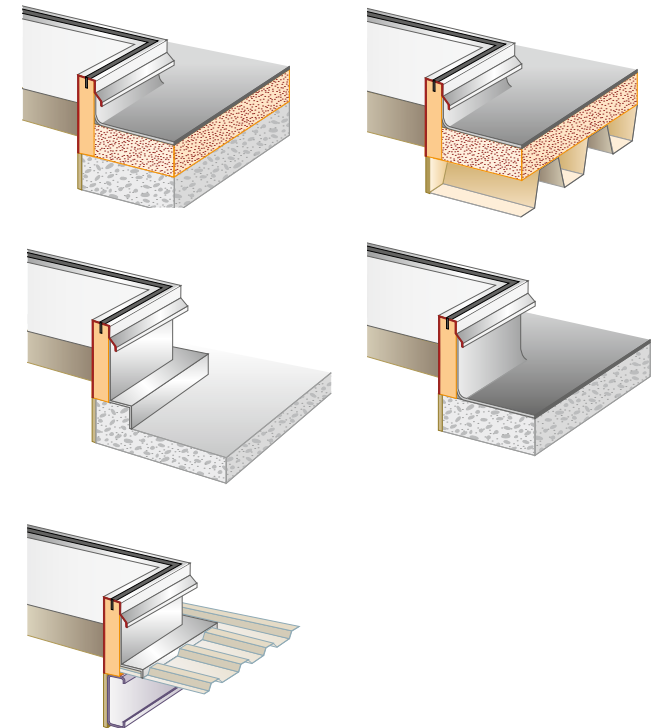
The roof hatches, which are suitable for use in a sea climate environment, are provided with a powder coating on both sides with a dry layer thickness of at least 80 micron. An additional special protective layer is placed before the powder coating.



## Assembly

Gorter roof hatches are delivered fully assembled. The assembly consists of three steps: (1) placement, (2) fastening and (3) gluing by the roofer.

Assembly is possible on both insulated and non-insulated concrete, wooden, and steel roofs. The maximum slope for the installation of RHTG hatches is 5°.



## 10-year warranty on roof hatches

All RHTG Gorter roof hatches come with a default 10-year warranty period. A 1-year warranty period applies to electronic operation systems, hollow ladders, scissor stairs, and fixed stairs.

## Support

Gorter has a dedicated support team for a range of countries. The Gorter support team helps you with requests for quotations, questions about specifications and installation options, order handling, and after-care. We would be happy to be of service.

Support:

+61 3 8648 6636

| [sales@gorterhatches.com.au](mailto:sales@gorterhatches.com.au)

+31 224 21 98 60

| [info@gortergroup.com](mailto:info@gortergroup.com)

## Quick delivery

Most products are available from stock, often within 24 hours. Engineering and assembly take place within the Gorter organisation, which ensures that your unique wishes can be addressed quickly.



# The smart RHTG roof hatch

CE & patented thermally broken structure



# Specifications RHTG

	RHTG
Insulation value, according to EN-ISO 10077-2	$U_w \leq 0,83 \text{ W}/(\text{m}^2 \cdot \text{K})$
Insulation value HR+++ glass	$U \leq 0,500 \text{ W}/(\text{m}^2 \cdot \text{K})$
Noise attenuation, according to EN-ISO 717-1:2013	27 dB
Waterproof, in accordance with EN 12208	Class E 650
Resistance to wind stress, in accordance with EN 12210	Class E 2400
Resistance to snow load, EN 1991-1-3	5 kN/m <sup>2</sup>
Impact soft body classification, in accordance with EN 13049	Class 3
Air permeability, in accordance with EN 12207	Class 4

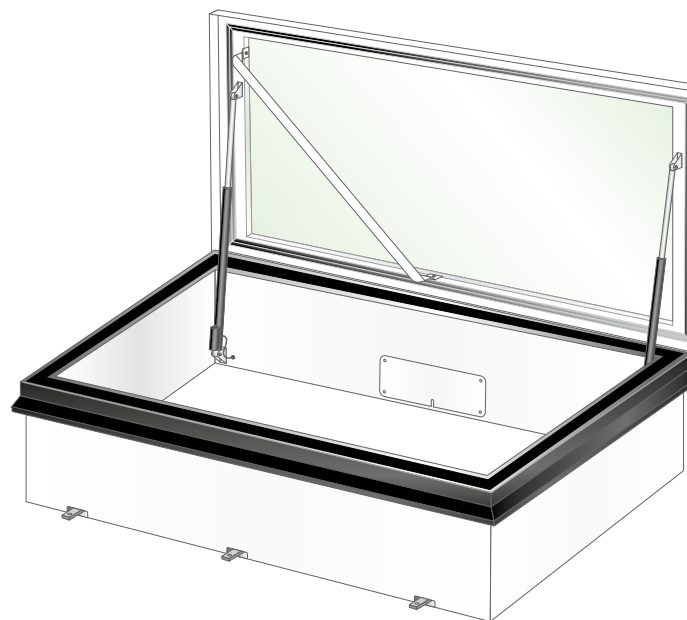
Roof hatch type	Access in mm	Weight
RHTG1015	1000 x <b>1500</b>	173 kg
RHTG1020	1000 x <b>2000</b>	219 kg
RHTG1025	1000 x <b>2500</b>	264 kg
RHTG1030	1000 x <b>3000</b>	309 kg

Hinge sides are in **bold**.

Exterior	Interior	
RAL 9005	RAL 9010	<ul style="list-style-type: none"> <li>» Thermally broken</li> <li>» HR+++ insulation glass</li> <li>» In aluminium</li> <li>» Burglar-proof</li> <li>» Impact resistant and self-cleaning</li> <li>» 2 powerful electric motors</li> </ul>

## Certification:

- » CE ETA-18/0831
- » TÜV NORD for the combinations



# Roof hatch combinations

## Why should you choose a combination?

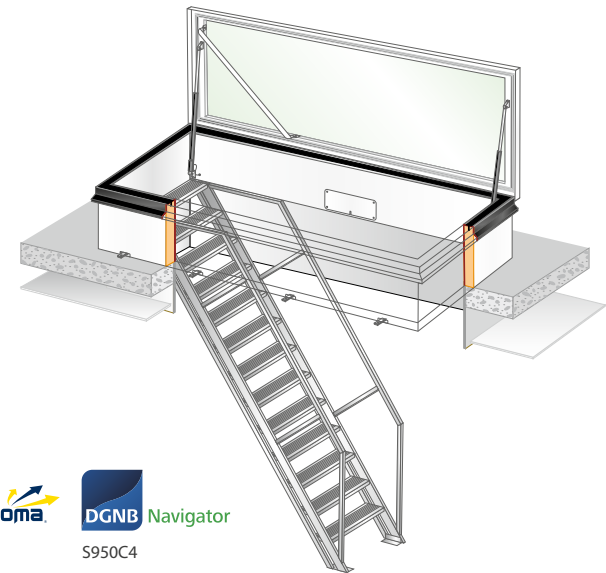
A Gorter combination provides you with a complete solution for roof access from the top floor of a building. In the RHTG, the combination consists of a roof hatch and a fixed stair which match perfectly. The combination with the GS55 fixed stairs is TÜV NORD-certified, which, with the supplied documents, can cover your RIE.



### Fixed stair

The Gorter fixed stairs are available in two versions for large or small Gorter roof hatches. The stairs have a modern look and can be used in virtually any interior with ceiling heights ranging between 2500 mm and 3370 mm. The self-adjusting steps make the stairs easy to install and suitable for changing locations.

## RHTG with fixed stair



### Specifications

Roof hatch type	Access in mm	Fixed stair type
RHTG1015	1000 x <b>1500</b>	GS50
RHTG1015	1000 x <b>2000</b>	GS50/GS55
RHTG1025	1000 x <b>2500</b>	GS50/GS55
RHTG1030	1000 x <b>3000</b>	GS50/GS55

Hinge sides are in **bold**.

### GS50 or GS55

- » GS50 for storey heights of 2500 to 3000 mm, slope 50° to 66°
- » GS55 for storey heights of 3000 to 3370 mm, slope 55° to 65°

### Certificering:

- » RHTG roof hatch: CE ETA-18/0831
- » The GS55 combination with TÜV NORD certificate in accordance with NEN-EN-ISO 14122-3 and "Baumuster geprüft" label.

A photograph of two men in a showroom. One man, seen from the back, is wearing a white t-shirt and looking towards a fixed staircase. The other man, in profile, is wearing a light blue polo shirt and holding a black folder, looking up at the staircase. The staircase is made of grey metal with white steps. In the background, there are windows with white blinds and some framed certificates on the wall.

## Fully certified

Gorter roof hatch combinations with GS55 are TÜV NORD certified and in the possession of a "Baumuster geprüft" label. The roof hatches have CE (ETA) certification.

## Roof hatch with fixed stair

The fixed stair and roof hatch combinations are available in two versions. The default GS55 combination has a slope of 55° to 65°. The steeper GS50 fixed stair is especially suitable for small spaces or in combination with the smaller roof hatch RHTG1015 and RHTG1020.

**The Netherlands**  
**Gorter Luiken BV**

Visit address:  
Zuiderweg 12  
NL-1741 NA Schagen  
The Netherlands

Postbus 265  
NL-1740 AG Schagen  
The Netherlands  
Phone: +31 224 21 98 60  
E-mail: [info@gorterluiken.nl](mailto:info@gorterluiken.nl)  
Website: [www.gorterluiken.nl](http://www.gorterluiken.nl)

**Belgium and Luxembourg**  
**Gorter - Obelux**

Meersbloem - Leupegem 21  
B-9700 Oudenaarde  
Belgium  
Phone: +32 5 523 2590  
E-mail: [info@gorterbelgie.be](mailto:info@gorterbelgie.be)  
Website: [www.gorterbelgie.be](http://www.gorterbelgie.be)

**France**  
**Gorter - Obelux**

Phone: +33 1 86 70 06 15  
E-mail: [info@gorterfrance.fr](mailto:info@gorterfrance.fr)  
Website: [www.gorterfrance.fr](http://www.gorterfrance.fr)

**Germany**  
**Gorter Deutschland GmbH**

Ohligsmühle 7  
42103 Wuppertal  
Germany  
Phone: +49 202 94709130

Munich  
Phone: +49 89 2421 8042

Zeven  
Phone: +49 4281 959 3045

E-mail: [info@gorterdeutschland.de](mailto:info@gorterdeutschland.de)  
Website: [www.gorterdeutschland.de](http://www.gorterdeutschland.de)

**Italy**  
**Gorter Italia™**

Via Nazionale 64  
39040 Ora (BZ)  
Italy  
Phone: +39 3408 230 686  
E-mail: [info@gorter.it](mailto:info@gorter.it)  
Website: [www.gorter.it](http://www.gorter.it)

**Switzerland**  
**Gorter Schweiz**

E-mail: [info@gorter.ch](mailto:info@gorter.ch)  
Website: [www.gorter.ch](http://www.gorter.ch)

**Spain**  
**Gorter España™**

Phone: +34 91 7710 249  
E-mail: [info@gorter.es](mailto:info@gorter.es)  
Website: [www.gorter.es](http://www.gorter.es)

**Denmark**  
**Gorter Danmark™**

E-mail: [info@gorterdanmark.dk](mailto:info@gorterdanmark.dk)  
Website: [www.gorterdanmark.dk](http://www.gorterdanmark.dk)

**Sweden**  
**Gorter Sverige™**

E-mail: [info@gorter.se](mailto:info@gorter.se)  
Website: [www.gorter.se](http://www.gorter.se)

**Hungary**  
**Gorter Hungary Kft.**

Helvécia, H-6034  
Rákóczi Str. 84.  
Hungary

E-mail: [info@gorterhungary.hu](mailto:info@gorterhungary.hu)  
Website: [www.gorterhungary.hu](http://www.gorterhungary.hu)

**Singapore**  
**Gorter Hatches Singapore**

Phone: +65 3159 0002  
E-mail: [sales@gorterhatches.com](mailto:sales@gorterhatches.com)  
Website: [www.gorterhatches.com](http://www.gorterhatches.com)

**Argentina**  
**Gorter Argentina™**

E-mail: [info@gorter.com.ar](mailto:info@gorter.com.ar)  
Website: [www.gorter.com.ar](http://www.gorter.com.ar)

**United Arab Emirates**  
**Gorter UAE**

E-mail: [info@gorter.ae](mailto:info@gorter.ae)  
Website: [www.gorter.ae](http://www.gorter.ae)

# Gorter Group™



**Australia, Asia and Middle East**  
**Gorter Hatches Pty Ltd**

Melbourne  
105 Wellington Street  
St Kilda VIC, 3182  
Australia  
Phone: +61 3 8648 6636

Perth  
Phone: +61 8 9463 6636

Adelaide  
Phone: +61 8 8311 1136

Brisbane  
Phone: +61 7 3337 9936

Sydney  
Phone: +61 2 8580 4436

E-mail: [sales@gorterhatches.com.au](mailto:sales@gorterhatches.com.au)  
Website: [www.gorterhatches.com.au](http://www.gorterhatches.com.au)

**New Zealand**  
**Gorter Hatches™**

Auckland  
Phone: +64 9 280 4726  
E-mail: [sales@gorterhatches.co.nz](mailto:sales@gorterhatches.co.nz)  
Website: [www.gorterhatches.co.nz](http://www.gorterhatches.co.nz)

