
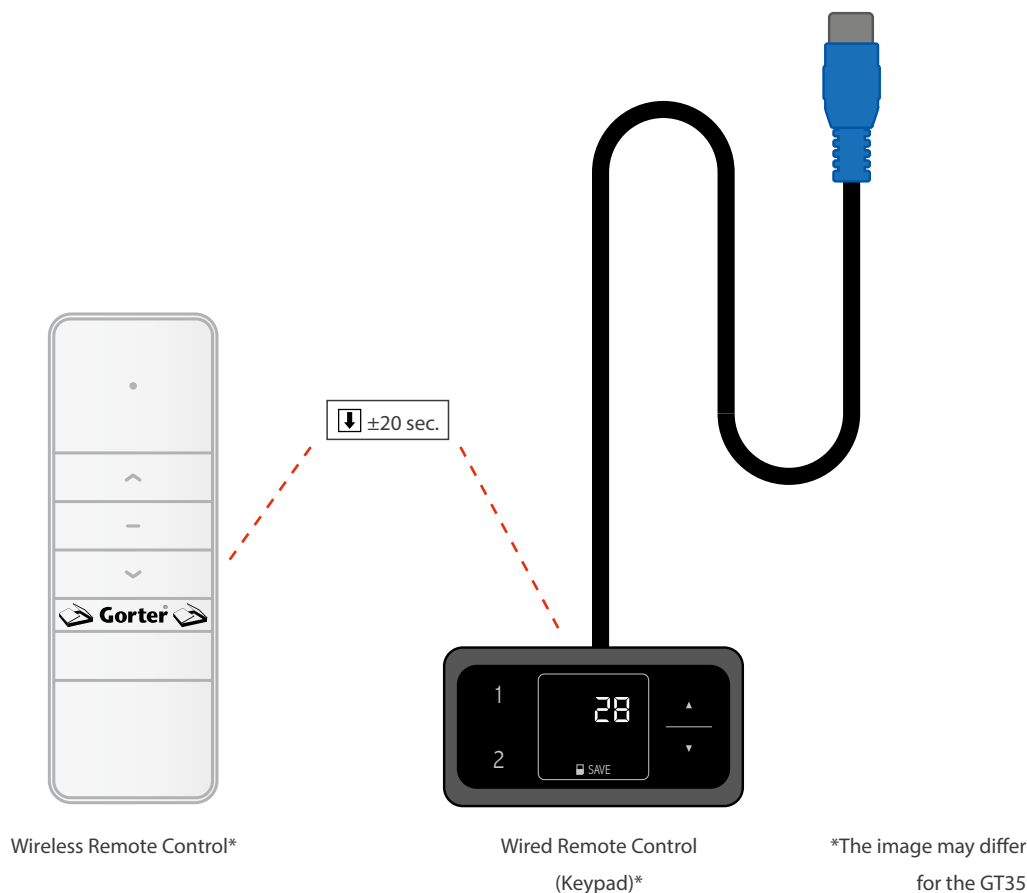


## Reset / calibration GT35 / GT50 motors and control box

If a fault occurs with the roof hatch, whatever the cause, a 'reset' must be performed.

The 'down' button  on the wired or wireless remote control should be pressed and held for approximately 20 seconds, so that the motors are fully run in. After the reset, the control box will make a 'click' sound and the system is again operational.



## Duty cycle - thermal protection

The control system (but also the motor(s)) has a duty cycle. This means that the control system operates for approximately 1 minute, followed by an inactive period of 9 minutes. One minute should be sufficient to open and close a roof hatch. If the time is exceeded, the control system will switch to the 'HOT' mode (thermal protection). After a waiting (cooling) period of several minutes, the control system will be operable again.

If it is not possible to wait, the following procedure can be followed to get the control system out of the 'HOT' mode: remove the mains power cord from the control box and wait for 10 seconds. After 10 seconds, reconnect the mains power cord to the control box and perform the reset as described above.

## Installation

When installing the motors, it should be ensured that the motors are in exactly the same position. If the attachment eyelet of one of the motors is tightened slightly more or less than the other motor, a difference will arise which will affect the synchronicity.

## Software

To load the software files, ConfigTool should be used. The programme will automatically give notification of updates. A driver needs to be installed for the necessary USB cable. Both the ConfigTool and the USB driver can be downloaded via the link: <http://www.logicdata.net/download/>